

# Midway Milliken Building

258,500 SF

256 Midway Drive • Union, South Carolina 29379



## EXCELLENT LOCATION

**CENTRALLY LOCATED IN THE SOUTHEAST** along the I-85 corridor between the metropolitan cities of Atlanta, Greenville, Columbia and Charlotte with close proximity to the Port of Charleston and Inland Port Greer.

## DEVELOPMENT READY

**MIDWAY GREEN INDUSTRIAL PARK IS A 142-ACRE,** South Carolina Department of Commerce Certified Industrial Park owned by Pacolet Milliken Enterprises.



## PROPERTY INFORMATION

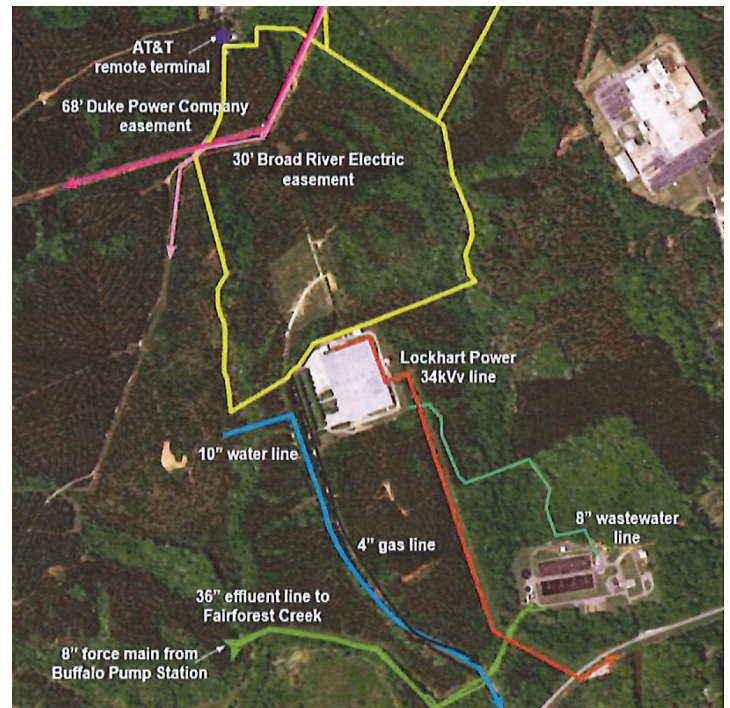
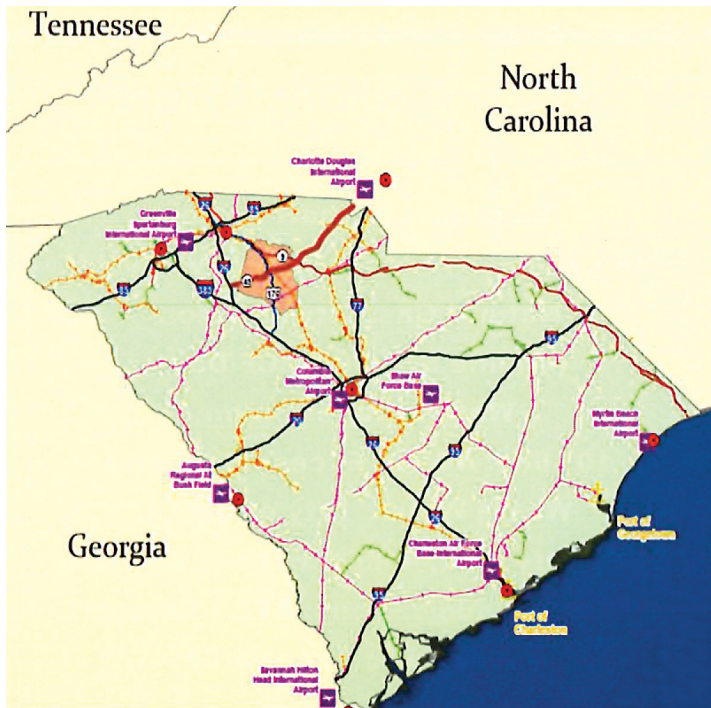
- **Building Owner:** County of Union
- **Land:** 17.5 Acres
- **Year Built:** 1972
- **Floor:** 6-8 inch Concrete
- **Walls:** Tilt-up Concrete Panel
- **Ceiling Height:** 26 feet at the Eaves
- **Loading Docks:** 12
- **Drive-in Doors:** 2
- **Lighting:** Fluorescent and Mercury Vapor
- **Fire Suppression:** 100% Sprinkled
- **Parking:** Asphalt Parking Area in Front

## UTILITY INFORMATION

- **Electric:** Provided by Lockhart Power; 34kV line; Available capacity >30MW
- **Natural Gas:** Provided by the City of Union; 4" line at 6,000 MCF/day
- **Water Service:** Provided by the City of Union; 10" line; 4 MGD excess capacity
- **Waste Water Service:** Provided by the City of Union; 8" Gravity line; 4 MGD excess capacity
- **Telecommunications:** AT&T/Charter; Fiber optic accessible



# Midway Milliken Building



## ACCESSIBILITY

- **SC Highway 49:** Adjacent
- **US Highway 176:** (closest four lane); 1.9 miles (3 km)
- **I-26:** (closest interstate) 17 miles (27 km)
- **I-385:** 25 miles (40 km)
- **I-85:** 41 miles (66 km)
- **Inland Port of Greer:** 46 miles (74 km)
- **Port of Charleston:** 178 miles (286 km)
- **Greenville-Spartanburg International Airport (GSP):** 43 miles (69 km)
- **Charlotte Douglas International Airport (CLT):** 61 miles (98 km)
- **Troy Shelton Field (Civil Airport in Union County):** 3.5 miles (5.6 km)
- **Railway:** Norfolk Southern 0.25 miles (0.4 km)



**KATHY JO LANCASTER**  
*Executive Director*

Office: 864-319-1097

Cell: 864-429-6814

[klancaster@uniondevelopmentboard.com](mailto:klancaster@uniondevelopmentboard.com)

207 South Herndon Street | Union, South Carolina 29379  
[www.uniondevelopmentboard.com](http://www.uniondevelopmentboard.com)